

INSCAPE
BLOOMSBURY
SPRING 2013

WHO WE ARE

Nicholas Friend MA, Founder and Director of INSCAPE, has been teaching adults in galleries, museums and country houses for over 30 years. He has taught for the Wallace Collection, the National Gallery and Sotheby's, and has conducted many tours at home and abroad. For 25 years he directed Cambridge University's History of Art Summer School. He is a Fellow of the Royal Society of Arts.

Louise Goldberg Friend, with a BA in art history and an MFA in Design, is INSCAPE's Director of Programming and Design. She brings with her a lifelong passion for connecting people to ideas and to one another.

Sara Pupi BA is INSCAPE's multi-lingual Operations Manager. Italian by birth, brought up in a French school in Turkey, she studied Anthropology, Psychology and Management at McGill University Montreal. To her administrative efficiency she brings effortless social skills in Italian, English, French and Spanish.

OUR TUTORS

Mary Acton BA, author and lecturer, studied at the Courtauld Institute and has taught at Brookes University and de Montfort University. She is currently the Associate Tutor in Art History for Oxford University Department of Continuing Education and co-Director of the undergraduate certificate in the History of Art. Her books include *Learning to Look at Paintings* (2008) and *Learning to Look at Modern Art* (2004)

Clare Ford-Wille BA, has been a lecturer for Birkbeck College, London University for over 30 years and is well known for her lectures for NADFAS, the Art Fund and the National Gallery. She has led numerous study tours abroad.

Gavin Webb MITG, an award winning professional London Blue Badge Tour Guide conducts tours for corporate clients as well as individuals and groups. He is a tutor on the London Blue Badge Course. He worked for over 20 years in the Financial City at global asset management companies and later in fund of hedge funds. He is an active member of INSCAPE.

INSCAPE CULTURAL STUDY SOCIETY

ARTS&LETTERS&SCIENCE&GEOGRAPHY&ARCHAEOLOGY&GEOLOGY
ARCHITECTURE&POETRY&ARTHISTORY&TECHNOLOGY
HISTORY&PHYSICS&PHILOSOPHY&RELIGION
LITERATURE&GARDENHISTORY&MUSIC

INSCAPE LECTURES

ART WORKERS' GUILD

QUEEN SQUARE

BLOOMSBURY

INSCAPE OFFICE

ST JUDE'S COTTAGE

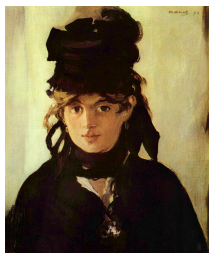
12A CASTLEBAR HILL

LONDON, W5 1TD

info@inscapetours.co.uk

020 8566 7539

EXHIBITIONS



ROYAL ACADEMY

'MANET: PORTRAYING LIFE'

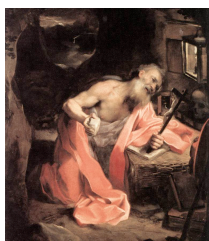
THURSDAY 14 OR THURSDAY 28 FEBRUARY
TUTOR NICHOLAS FRIEND



TATE MODERN

'ROY LICHTENSTEIN'

TUESDAY 5 MARCH
TUTOR MARY ACTON



NATIONAL GALLERY

'BAROCCI: BRILLIANCE AND GRACE'

TUESDAY 12 MARCH
TUTOR CLARE FORD WILLE



BRITISH MUSEUM

'LIFE AND DEATH: POMPEII AND HERCULANEUM'

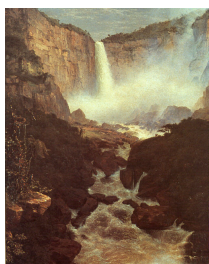
TUESDAY 30 APRIL
TUTOR NICHOLAS FRIEND



ROYAL ACADEMY

'GEORGE BELLOW'S'

WEDNESDAY 10 APRIL
TUTOR NICHOLAS FRIEND



NATIONAL GALLERY

'THROUGH AMERICAN EYES: FREDERIC CHURCH
AND THE LANDSCAPE OIL SKETCH'

WEDNESDAY 17 APRIL
TUTOR NICHOLAS FRIEND

ROYAL ACADEMY

'MANET: PORTRAYING LIFE'

THURSDAY 14 OR THURSDAY 28 FEBRUARY

TUTOR NICHOLAS FRIEND

At the heart of this first major exhibition in the UK of Manet's portraiture, specifically in his *La Musique Aux Tuileries*, we glimpse Baudelaire, Offenbach, Zola, Astruc, Gautier, and Fantin-Latour chatting to one another. Numerous individual portraits of his friends, the most significant cultural figures of 19c Paris, are here. Highlight loans include *The Luncheon*, 1868 (Munich), *Mme Manet in the Conservatory*, 1879 (Oslo); *Berthe Morisot with a Bouquet of Violets*, 1872 (Paris), *Street Singer*, c.1862 (Boston), and *The Railway*, 1873 (Washington).

MEET 10:30 coffee for 11 am at the Art Workers' Guild

ENDS 4 pm Royal Academy

COST £79 members, £89 non-members, including Art Fund Members (£65 members, £75 non-members for Friends of the RA) including coffee, light lunch with wine, and exhibition entry

TATE MODERN

'ROY LICHTENSTEIN'

TUESDAY 5 MARCH

TUTOR MARY ACTON

Paintings that launched a deceptively simple and playful revolution we know as Pop Art, i.e. swirling washing machines, diamond engagement rings, steaming hot cups of coffee, hi-top sneakers, golf balls and mustard-covered hot dogs are just a few of the familiar subjects portrayed in Lichtenstein's iconic paintings of the early 1960s. Tate Modern hosts the most comprehensive collection to date of the artist's work demonstrating the importance of Lichtenstein's influence, his engagement with art history and his enduring legacy as an artist.

MEET 10:30 coffee for 11 am at the Art Workers' Guild

ENDS 4 pm Tate Modern

COST £78 members, £88 non-members (£65 members, £75 non-members for Friends of Tate; £72 members, £82 non-members for Art Fund Member) including coffee, light lunch with wine, and exhibition entry

NATIONAL GALLERY

'BAROCCI: BRILLIANCE AND GRACE'

TUESDAY 12 MARCH

TUTOR CLARE FORD-WILLE

Considered the greatest and most individual painter of his time in central Italy, Federico Barocci (1535–1612), deserves contemporary praise for his most evident compassion, and unique sensitivity to colour. Barocci's most spectacular Marchigian altarpieces, – never before seen outside Italy – his famous *Entombment* from Senigallia and *Last Supper* from Urbino Cathedral are on display with sixteen other altarpieces and devotional paintings. Five portraits with preparatory studies and oil sketches from life complete this well-deserved exhibition.

MEET 10:30 coffee for 11 am at the Art Workers' Guild

ENDS 4 pm National Gallery

COST £76 members, £86 non-members (£72 members, £82 non-members for Art Fund Member) including coffee, light lunch with wine, and exhibition entry

BRITISH MUSEUM

'LIFE AND DEATH: POMPEII AND HERCULANEUM'

THURSDAY 30 APRIL

TUTOR NICHOLAS FRIEND

*INSCAPE ARMCHAIR TRAVELLER SERIES

When Vesuvius unleashed its fury in 79 AD, life in two thriving Roman cities on the Bay of Naples, Pompeii and Herculaneum, disappeared within a space of 24 hours. The British Museum's spring exhibition, 'Life and Death in Pompeii and Herculaneum', reveals that moment, yet most eloquently uncovers the everyday realities of quite ordinary people caught up in an extraordinary event. 250 objects provide provocative glimpses into the bustling streets and calm, cool marble courtyards of the Roman Empire.

MEET 10:30 coffee for 11 am at the Art Workers' Guild

ENDS 4 pm British Museum

COST £77 members, £87 non-members, (£65 members, £75 non-members for British Museum members; £72 members, £82 non-members for Art Fund Member) including coffee, light lunch with wine and exhibition entry. Afternoon optional, please deduct £12 for exhibition entry.

ROYAL ACADEMY

'GEORGE BELLAWS'

WEDNESDAY 10 APRIL

TUTOR NICHOLAS FRIEND

George Wesley Bellows (1882-1925), American realist painter, is hailed as "the most acclaimed American artist of his generation", the most important figure "to negotiate the transition from the Victorian to the modern era in American culture." The Royal Academy offers the first comprehensive exhibition of his career in more than three decades. 'George Bellows' includes 130 paintings, drawings and lithographs of tenement children, boxers, the urban landscape of New York, as well as Maine seascapes, and family portraits.

MEET 10:30 coffee for 11 am at the Art Workers' Guild

ENDS 4 pm Royal Academy

COST £78 members, £88 non-members, including Art Fund Members (£65 members, £75 non-members for Friends of the RA) including coffee, light lunch with wine and exhibition entry

NATIONAL GALLERY

THROUGH AMERICAN EYES:

FREDERIC CHURCH AND THE LANDSCAPE OIL SKETCH

WEDNESDAY 17 APRIL

TUTOR NICHOLAS FRIEND

A fresh and original aspect of the work of the leading member of the mid-19c Hudson River School of landscape painters, Frederic Edwin Church (1826–1900) will be on display at the National Gallery. Church's landscape oil sketches, rapidly executed with superb brush technique at home and on his extensive travels, express the flow and energy of his composition. Some 30 oil sketches are joined by a single, monumental painting, *Niagara Falls*, showing the relationship between sketch and finished masterpiece.

MEET 10:30 coffee for 11 am at the Art Workers' Guild

ENDS 4 pm National Gallery

COST £65 members, £75 non-members, including coffee, light lunch with wine (admission free)

NICHOLAS FRIEND LECTURES



INSCAPE BLOOMSBURY
ART WORKERS' GUILD
6 QUEEN SQUARE
BLOOMSBURY
LONDON WC1N 3AT



THE RITE OF SPRING 100
WEDNESDAY 13 FEBRUARY



THE YEAR IN QUESTION,
1848

TUESDAY 15 JANUARY
OR THURSDAY 17 JANUARY



THE EXILE IN QUESTION,
WAGNER

WEDNESDAY 20 FEBRUARY
OR THURSDAY 14 MARCH

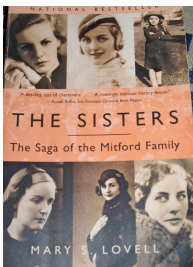


THE ARTIST IN QUESTION,
REMBRANDT

WEDNESDAY 16 JANUARY
OR TUESDAY 22 JANUARY



BENJAMIN BRITTEN 100
WEDNESDAY 3 APRIL



THE FAMILY IN QUESTION,
THE MITFORDS

WEDNESDAY 27 FEBRUARY



VERDI 200
FRIDAY 19 APRIL



THE MYTH IN QUESTION,
KING ARTHUR

WEDNESDAY 6 FEBRUARY
OR TUESDAY 19 FEBRUARY



PRIDE AND PREJUDICE 200
WEDNESDAY 15 MAY

THE YEAR IN QUESTION, 1848

TUESDAY 15 OR THURSDAY 17 JANUARY

Revolutions from Sicily to Brazil; Meissonnier experiences and paints the *Paris Barricade*; Ireland suffers its Potato Famine and California its Gold Rush; Mexico cedes vast acreage to US; first Women's Rights Convention in New York; Courbet opposes his paintings to Ingres, the Pre-Raphaelite Brotherhood is founded; Elizabeth Gaskell publishes '*Mary Barton*', Marx *The Communist Manifesto*, Dickens *Dombey and Son* and Macaulay *The History of England*; Shaker hymn "*Simple Gifts*" written and composed in Alfred, Maine. Verdi's *Il Corsaro* premieres in Trieste.

MEET 10:30 coffee for 11 am at the Art Workers' Guild

ENDS 4 pm Art Workers Guild

COST £75 members, £85 non-members, including coffee, light lunch with wine

THE ARTIST IN QUESTION, REMBRANDT

WEDNESDAY 16 OR TUESDAY 22 JANUARY

Rembrandt painted more self-portraits than any other artist, either before or since. Hugely complex, with enormous talent, his self-portraits reveal a man disappearing within his own investigations. His understanding of human beings and their personae was without parallel; Simon Schama writes, "No painter would ever understand the theatricality of social life as well as Rembrandt. He saw the actors in men and the men in actors." We investigate the man, his life, his work and patronage.

MEET 10:30 coffee for 11 am at the Art Workers' Guild

ENDS 4 pm Art Workers Guild

COST £75 members, £85 non-members, including coffee, light lunch with wine

THE FAMILY IN QUESTION, THE MITFORDS

WEDNESDAY 27 FEBRUARY

The Times journalist Ben Macintyre described the Mitford sisters as "Diana the Fascist, Jessica the Communist, Unity the Hitler-lover, Nancy the Novelist, Deborah the Duchess and Pamela the unobtrusive poultry connoisseur." Notorious then and now, and noted as prolific letter-writers, their letters, many between the sisters themselves, will serve as a vehicle for this study day. 'Most ardent burnishers of their own public image', hugely influential in the culture of their times, their views on many matters defined a generation.

MEET 10:30 coffee for 11 am at the Art Workers' Guild

ENDS 4 pm Art Workers Guild

COST £75 members, £85 non-members, including coffee, light lunch with wine

THE MYTH IN QUESTION, KING ARTHUR

WEDNESDAY 6 OR TUESDAY 19 FEBRUARY

Our most enduringly romantic legendary figure, the 6th century British warrior, King Arthur, begins this new INSCAPE 'In Question' series. Centuries of fascinating material refer to him: ancient Welsh texts, 12c historians Geoffrey of Monmouth and Chretien de Troyes, the 1485 poem, 'Morte D'Arthur' by Sir Thomas Malory; Purcell, and Dryden's opera "The British Worthy", Wagner; 19c and 20c artists, T. H. White, Tennyson, Sir Arnold Bax, William Morris and Edward Burne-Jones, Lerner and Lowe's delightful musical 'Camelot'.

MEET 10:30 coffee for 11 am at the Art Workers' Guild

ENDS 4 pm Art Workers Guild

COST £75 members, £85 non-members, including coffee, light lunch with wine

THE RITE OF SPRING AT 100

WEDNESDAY 13 FEBRUARY

Most energising classical score of the 20c, Stravinsky's 'Rite of Spring' caused a riot in Paris at its opening 100 years ago. Dancing with the pelvis rather than the ankles, it possessed a dangerous animal energy, led by the bestial style of Nijinsky. In the very same year, Marcel Duchamp shocked Americans at the Armory Show in New York, while D.H.Lawrence's 'Sons and Lovers', and Proust's 'Swann's Way' introduced new notes of psychological profundity.

MEET 10:30 coffee for 11 am at the Art Workers' Guild

ENDS 4 pm Art Workers Guild

COST £75 members, £85 non-members, including coffee, light lunch with wine

Please note: for concert celebrations see programme details on page 19.

THE EXILE IN QUESTION, WAGNER

WEDNESDAY 20 FEBRUARY OR THURSDAY 14 MARCH

Wagner's father died when he was 6 months old, his beloved stepfather when he was 8; his three-decade marriage was plagued by disillusionments and infidelities, his debts so great he was constantly on the move, from Germany to England, France, Switzerland and Italy, avoiding irate spouses and creditors. Each death, each move, each infidelity, each note of Beethoven's music, each word of Schopenhauer's philosophy, each moment with closest 'friends' Liszt and Nietzsche, fed the most stirring music ever composed.

MEET 10:30 coffee for 11 am at the Art Workers' Guild

ENDS 4 pm Art Workers Guild

COST £75 members, £85 non-members, including coffee, light lunch with wine

Please note: for Wagner's London Birthday celebrations see programme details on page 20.

BENJAMIN BRITTEN 100

WEDNESDAY 3 APRIL

By melding an insular English tradition with the vision of Mahler, Schoenberg, and Shostakovich, Benjamin Britten succeeded in translating his deepest responses to literature and landscape into music. His inspirations were varied: 'Peter Grimes' from George Crabbe, poet of his beloved Suffolk; 'Albert Herring' from Maupassant; 'Billy Budd' from Hermann Melville, and the 'Turn of the Screw' from Henry James. His friend WH Auden inspired the mechanistic *Night Mail*, and the classical *Hymn to St Cecilia's Day*.

MEET 12 noon for 12:15 pm talk at Wigmore Hall

ENDS 5 pm Art Workers Guild

COST £75 including concert tickets, taxis to the Art Workers' Guild, light post-concert lunch and Benjamin Britten centenary lecture by Nicholas Friend.

Please note: for further concert programme details, see page 19.

VERDI 200

FRIDAY 19 APRIL

From the moment of his birth 200 years ago, it has been difficult to separate hard fact from romantic myth regarding Verdi's life. Suggestions that *La Traviata* was inspired by the life of his mistress, that the *Chorus of the Hebrew Slaves* inspired the Risorgimento, and that Verdi ended as life as a kind of Falstaff, all need re-evaluating in the context of some of the most sublime and uplifting songs ever composed.

MEET 10:30 coffee for 11 am at the Art Workers' Guild

ENDS 4 pm Art Workers Guild

COST £75 members, £85 non-members, including coffee, light lunch with wine

Please note: for concert celebrations see programme details on page 20.

PRIDE AND PREJUDICE 200

WEDNESDAY 15 MAY

Pride and Prejudice, published 200 years ago, has enjoyed a rare and deserved afterlife. Along with *Gosford Park*, *Emma*, *Young Victoria*, *Jane Eyre* and, most recently, *Downton Abbey*, it has become an eloquent vehicle for cinematic time travel. Just how accurate are the reconstructed interiors and content in these adaptations? Using the astonishing detail in archival household inventories of several great 18c and 19c English country houses and London town houses, we examine the goods and chattels above stairs and below stairs as depicted in the film versions and described in the text, checking for fantasy and fact.

MEET 10:30 coffee for 11 am at the Art Workers' Guild

ENDS 4 pm Art Workers Guild

COST £75 members, £85 non-members, including coffee, light lunch with wine

NICHOLAS FRIEND
LONDON WALKS



SOHO SQUARE

SPOKES IN A WHEEL

GREEK ST, FRITH ST AND OLD COMPTON ST
TUESDAY 14 MAY

BREWER ST, OLD COMPTON ST AND DEAN ST
TUESDAY 21 MAY

NOEL ST AND WARDOUR ST
TUESDAY 28 MAY

CHARLOTTE ST AND SOHO ST
TUESDAY 4 JUNE

LONDON'S VILLAGES

JEWELS IN A CROWN

ROTHERHITHE
THURSDAY 16 MAY

BERMONDSEY
THURSDAY 23 MAY

CAMBERWELL
THURSDAY 30 MAY

THE TALL CITY WALK

WEDNESDAY 12 JUNE

GUEST TUTOR GAVIN WEBB
DETAILS PAGE 17



SPOKES IN A WHEEL SOHO SQUARE

FOUR TUESDAYS

A glorious woodland in the reign of Henry VIII, Soho may take its name from the huntman's cry echoing across its open spaces. The area was first developed by a bricklayer named Richard Frith in 1677. French Huguenots poured in after the Revocation of the Edict of Nantes in 1685, and the area was abandoned by the fashionable to become famous by the early 20c as a haunt of prostitutes, but also of writers and artists such as Dylan Thomas, Francis Bacon and the Liverpool Beat poets, and of music clubs such as Ronnie Scott's and the Marquee, where the Rolling Stones first performed in 1962. Now Soho has been dramatically cleaned up as the centre of the independent film and video industry, and has some of the finest independent restaurants in London.

GREEK STREET, FRITH STREET AND OLD COMPTON STREET

TUESDAY 14 MAY

MEET: outside Palace Theatre, Cambridge Circus

BREWER STREET, OLD COMPTON STREET AND DEAN STREET

TUESDAY 21 MAY

MEET: outside Leicester Arms on Glasshouse Street

NOEL STREET AND WARDOUR STREET

TUESDAY 28 MAY

Meet: outside Hobbs Shop on junction of Regent Street and Great Marlborough Street.

CHARLOTTE STREET AND SOHO STREET

TUESDAY 4 JUNE

Meet: outside Italiano Coffee Company on junction of Charlotte Street and Goodge Street.

MEET 11 am meeting point as indicated above

ENDS 1 pm followed by optional lunch nearby

COST £40 members, £50 non-members, or all four days for £140 members, £180 non-members.



LONDON'S VILLAGES

JEWELS IN A CROWN

THREE THURSDAYS IN MAY

ROTHERHITHE

THURSDAY 16 MAY

Gaining its name from Anglo-Saxon 'rother' for sailor, and 'hyth' for haven or wharf, Rotherhithe was London's most important dock until the mid 19c. Wood from the *Fighting Temeraire* was used in furnishing St Marys Parish church (1714). Rotherhithe still maintains strong links with Scandinavia, and is home to a Norwegian, a Finnish and a Swedish church. Renowned for the world's 8th wonder, the first tunnel beneath a river, whose story is told in the Brunel Museum.

MEET 11 am St Marys Church, Rotherhithe

ENDS 4 pm Rotherhithe

BERMONDSEY

THURSDAY 23 MAY

Bermondsey's assets in the Doomesday book were, "13 hides, 'a new and handsome church' [a Cluniac priory in 1082], 5 ploughs, 20 acres of meadow and woodland for 5 pigs'. Monks cleared, embanked and cultivated the area, Knights Templar named the streets for wealthy citizens' and clerics' residences (Shad Thames, Tooley St); junction of first railway lines; docks became notorious slums in 19c, the haunt of Bill Sykes in *Oliver Twist*; the Shard, Europe's tallest building brings new fortune and fame

MEET 11 am at St Marys Church, Bermondsey

ENDS 4 pm Bermondsey

CAMBERWELL

THURSDAY 30 MAY

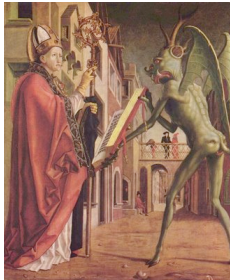
In Doomesday, *Cambrewelle* for its' Celtic inhabitants, "Well of the Britons", early parish church covered 4,570 acres including Dulwich and Peckham; 18c elegant Georgian terraces, George Gilbert Scott's St Giles, Giles Gilbert Scott's William Booth Memorial Training College; transformed by railways: music halls, and 'variety theatres', and mid- 20c Art Deco Grade II ABC cinema seated 2500; writers Ruskin, Thomas Hood, Robert Browning, Muriel Spark, the McDonagh brothers, and YBA'S at Goldsmith's College.

MEET 11 am St Giles Church, Camberwell

ENDS 4 pm Camberwell

COST £60 members, £70 non-members, per day, or £150 and £180 for whole course. Please note lunch will be arranged in an appropriate place, but is optional and not included in the price.

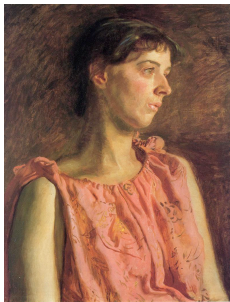
COURSES



HELL AND DAMNATION ART, MUSIC AND LITERATURE

CLARE FORD WILLE & NICHOLAS FRIEND

TUESDAYS 29 JANUARY
5 FEBRUARY
12 FEBRUARY



THROUGH AMERICAN EYES

NICHOLAS FRIEND

WEDNESDAYS 10 APRIL
17 APRIL
24 APRIL



SPOKES IN A WHEEL: SOHO SQUARE

NICHOLAS FRIEND

TUESDAYS 14 MAY
21 MAY
28 MAY
4 JUNE



JEWELS IN A CROWN: LONDON'S VILLAGES ROTHERHITHE, BERMONDSEY, CAMBERWELL

NICHOLAS FRIEND

THURSDAYS 16 MAY
23 MAY
30 MAY



TALL: FROM THE PYRAMIDS TO THE SHARD

NICHOLAS FRIEND & GAVIN WEBB

WEDNESDAYS 29 MAY
5 JUNE
12 JUNE



HELL AND DAMNATION

THREE TUESDAYS

TUTORS CLARE FORD-WILLE AND NICHOLAS FRIEND

In a medieval culture where illiteracy was the norm, symbolic imagery, brimming with depictions of Satan and his rampaging minions, was vital to the control of the minds, hearts and bodies of the masses. For those rare educated scribes, scholars or rulers significant texts presented equally petrifying ideology. We explore imagery and text: Dante, Bosch, Pacher, Dürer, Michelangelo, Marlowe, Milton, Hogarth, William Blake, Gustave Dore, John Martin, Delacroix, Gauguin, and many others.

IN ART – PART I

TUESDAY 29 JANUARY

TUTOR CLARE FORD-WILLE

IN ART – PART II

TUESDAY 5 FEBRUARY

TUTOR CLARE FORD-WILLE

IN MUSIC AND LITERATURE – PART II

TUESDAY 12 FEBRUARY

TUTOR NICHOLAS FRIEND

MEET 10:30 coffee for 11 am at the Art Workers' Guild

ENDS 4 pm Art Workers Guild

COST £75 members, £85 non-members, including coffee, light lunch with wine for each day, or all three days for £200 members, £230 non-members.



THROUGH AMERICAN EYES

THREE WEDNESDAYS

TUTOR NICHOLAS FRIEND

Two exhibitions in London next Spring allow us to see American art as though we had flown across the Atlantic. The expansive spaces of the Royal Academy will fill with George Bellows' (1882-1925) view of ebullient American culture at the fin de siècle, especially in New York City. At the National Gallery, a fresh and original aspect of the work of the leading member of the Hudson River school of landscape painters, Frederic Church (1826-1900), is exhibited. His oil sketches, executed both at home and on his extensive travels to Niagara Falls, Labrador, Jamaica, Mexico and the Middle East, display his passion for wild natural phenomena.

American art reveals a frank energy, whether of observation, psychological insight or brushstroke. We examine the way in which Americans have seen themselves. From primitive portraits unrestrained by the demands of European Courts, to the entrepreneurial pride of the subjects of John Singleton Copley, to the moving sympathy for his sitters displayed by Thomas Eakins, we gain understanding of what makes American art unique.

THE AMERICAN REALIST: GEORGE BELLOWS

WEDNESDAY 10 APRIL

MEET 10:30 coffee for 11 am at Art Workers' Guild ENDS 4 pm Royal Academy
COST £78 members, £88 non-members, including Art Fund Members (£65 members, £75 non-members for Friends of the RA) including coffee, light lunch with wine and exhibition entry

THE PASSIONATE TRAVELLER: FREDERIC CHURCH

WEDNESDAY 17 APRIL

MEET 10:30 coffee for 11 am at the Art Workers' Guild ENDS 4 pm National Gallery
COST £65 members, £75 non-members, including coffee, light lunch with wine (admission free)

THE AMERICAN HUMANIST: THOMAS EAKINS

WEDNESDAY 24 APRIL

MEET 10:30 coffee for 11 am at the Art Workers' Guild ENDS 4 pm Art Workers' Guild
COST £75 members, £85 non-members, including coffee, light lunch with wine

COST FOR ALL THREE DAYS

£195 members, £225 non-members (£182 members, £212 non-members for Friends of the RA), including coffee, light lunch with wine and exhibition entry



TALL

FROM THE PYRAMIDS TO THE SHARD

THREE WEDNESDAYS

TUTORS NICHOLAS FRIEND AND GAVIN WEBB

To stand upright, our vision pointed beyond clouds and stars, is to fulfil the promise of humanity. From sandcastles and card-houses to pyramids and skyscrapers we build high, daring gravity to pull us or our creations down, risking the collapse of our optimism. Challenging horizontal certainty, whether of forest floor, tabletop or plain, we resist the anger of the gods, and the criticism of future kings.

The urge to build tall must certainly pre-date the building of the Gaza pyramids, only remnant of the seven wonders of the ancient world. In this course we explore the history of man's urge to build tall structures and the fascinating engineering challenges met and overcome. We cover twenty-six centuries, beginning with the earliest evidence of our drive to place ourselves alongside or higher than those with wings to the present day. We conclude with a visit to London's most recent sky-scraper, the tallest building in Europe, Renzo Piano's The Shard.

TOWERS OF BABEL: ANTIQUITY

WEDNESDAY 29 MAY

TUTOR NICHOLAS FRIEND

MEET 10:30 coffee for 11 am at the Art Workers' Guild

ENDS 4 pm Art Workers' Guild

COST £75 members, £85 non-members, including coffee, light lunch with wine

TOWERS OF MAMMON: MODERN

WEDNESDAY 5 JUNE

TUTOR NICHOLAS FRIEND

MEET 10:30 coffee for 11 am at the Art Workers' Guild

ENDS 4 pm Art Workers' Guild

COST £75 members, £85 non-members, including coffee, light lunch with wine

THE TALL CITY WALK

WEDNESDAY 12 JUNE

TUTOR GAVIN WEBB

MEET 11 am at Canary Wharf Station, in front of All Bar One

ENDS 3:30 pm at London Bridge Station

COST £65 members, £75 non-members

COST Individual sessions as priced above, cost for all three days £200 members, £225 non-members, including coffee and light lunch with wine on the two sessions at the Art Workers' Guild. Please note that on the day of the Tall City Walk, arrangements will be made for lunch in a convenient place, but is optional and not included in the price.

NICHOLAS FRIEND
ANNIVERSARY CELEBRATIONS



THE RITE OF SPRING 100
ROYAL FESTIVAL HALL
SATURDAY
16 FEBRUARY

BENJAMIN BRITTEN 100
WIGMORE HALL
WEDNESDAY
3 APRIL

VERDI'S REQUIEM 200
ROYAL FESTIVAL HALL
SATURDAY
20 APRIL

WAGNER'S 200 LONDON BIRTHDAY CELEBRATION
ROYAL FESTIVAL HALL
WEDNESDAY
22 MAY



THE RITE OF SPRING 100
LONDON PHILHARMONIC ORCHESTRA
ROYAL FESTIVAL HALL
SATURDAY 16 FEBRUARY
TUTOR NICHOLAS FRIEND

Yannick Nézet-Séguin *conductor*
Leila Josefowicz *violin*

Maurice Ravel: *Ma mère l'oye* (Mother Goose), ballet complete

Sergey Prokofiev: Violin Concerto No.1 in D, Op.19

Interval

Igor Stravinsky: *The Rite of Spring*

MEET 6:30 pm for 7:30 pm concert at the Royal Festival Hall for drink and short pre-concert talk

ENDS 9:30 pm at the Royal Festival Hall

COST £45 including pre-concert talk and front stall ticket



BENJAMIN BRITTEN 100
THE BRITTEN SINFONIA
WIGMORE HALL
WEDNESDAY 3 APRIL
TUTOR NICHOLAS FRIEND

Jacqueline Shave, Miranda Dale *violins*

Clare Finnimore *viola*

Caroline Dearnley *cello*

Nicholas Daniel *oboe*

Lucy Wakeford *harp*

Britten Six Metamorphoses after Ovid

Britten Tema 'Sacher'

Bridge Two Old English Songs

Britten Suite for Harp

Bridge Sir Roger de Coverley

MEET 12 noon for 12:15 pm talk at Wigmore Hall

ENDS 5 pm Art Workers Guild

COST £75 including concert tickets, taxis to the Art Workers' Guild, light post-concert lunch and Benjamin Britten centenary lecture by Nicholas Friend.

VERDI'S REQUIEM
PHILHARMONIA ORCHESTRA
ROYAL FESTIVAL HALL
SATURDAY 20 APRIL
TUTOR NICHOLAS FRIEND

A thunderous silence greeted the close of Verdi's Requiem at its premiere in 1874. Denounced as "opera in ecclesiastical get-up"! Verdi responded, 'While I'm not an atheist, I'm certainly not much of a believer.' An epic masterpiece, Verdi's requiem runs the whole gamut of unencumbered human emotions from the rending fortissimo eruptions of the *Dies irae*, through the dancing energy of the *Sanctus* to the poignant, painful acceptance at the end.

Daniele Gatti *conductor*

Krassimira Stoyanova *soprano*
Marie-Nicole Lemieux *contralto*
Francesco Meli *tenor*
Carlo Colombara *bass-baritone*
Philharmonia Chorus
Philharmonia Voices

Please note there will be no interval

MEET 6:30 pm at the Royal Festival Hall for drink and short pre-concert talk, 7:30 pm concert
ENDS 9:30 pm at the Royal Festival Hall
COST £40 including pre-concert talk and rear stall tickets



WAGNER'S LONDON BIRTHDAY CELEBRATION
PHILHARMONIA ORCHESTRA
ROYAL FESTIVAL HALL
WEDNESDAY 22 MAY
TUTOR NICHOLAS FRIEND

Sir Andrew Davis *conductor*

David Edwards *director*
Giselle Allen *soprano*
Susan Bullock *soprano*
James Rutherford *bass*

Richard Wagner: Overture, Die Meistersinger von Nürnberg
Richard Wagner: Prelude & Liebestod from Tristan und Isolde
Interval
Richard Wagner: Die Walküre, Act 3
(semi-staged performance in German with English surtitles)

MEET 6:30 pm at the Royal Festival Hall for drink and short pre-concert talk, 7:30pm concert
ENDS 9:30 pm at the Royal Festival Hall
COST £40 including pre-concert talk and rear stall tickets

JANUARY CALENDAR JUNE

2013

JANUARY 2013

TUESDAY 15 OR THURSDAY 17 JANUARY
WEDNESDAY 16 OR TUESDAY 22 JANUARY
TUESDAY 29 JANUARY
WEDNESDAY 30 JANUARY

THE YEAR IN QUESTION, 1848
THE ARTIST IN QUESTION, REMBRANDT
HELL AND DAMNATION PART I
NEW YEAR PARTY AT 2 TEMPLE PLACE

FEBRUARY 2013

TUESDAY 5 FEBRUARY
WEDNESDAY 6 OR TUESDAY 19 FEBRUARY
TUESDAY 12 FEBRUARY
WEDNESDAY 13 FEBRUARY
THURSDAY 14 OR THURSDAY 28 FEBRUARY
SATURDAY 16 FEBRUARY
WED 20 FEBRUARY OR THURS 14 MARCH
WEDNESDAY 27 FEBRUARY

HELL AND DAMNATION PART II
THE MYTH IN QUESTION, KING ARTHUR
HELL AND DAMNATION PART III
THE RITE OF SPRING AT 100
'MANET: PORTRAYING LIFE'
THE RITE OF SPRING CONCERT
THE EXILE IN QUESTION, WAGNER
THE FAMILY IN QUESTION, THE MITFORDS

MARCH 2013

TUESDAY 5 MARCH
TUESDAY 12 MARCH
THURSDAY 14 MARCH

ROY LICHTENSTEIN
BAROCCI: BRILLIANCE AND GRACE
THE EXILE IN QUESTION, WAGNER

APRIL 2013

WEDNESDAY 3 APRIL
WEDNESDAY 10 APRIL
WEDNESDAY 17 APRIL
FRIDAY 19 APRIL
SATURDAY 20 APRIL
WEDNESDAY 24 APRIL
TUESDAY 30 APRIL

BENJAMIN BRITTEN 100 & CONCERT
THROUGH AMERICAN EYES I: BELLOWS
THROUGH AMERICAN EYES II: CHURCH
VERDI 200
VERDI'S REQUIEM AT ROYAL FESTIVAL HALL
THROUGH AMERICAN EYES III: EAKINS
'LIFE AND DEATH: POMPEII AND HERCULANEUM'

MAY 2013

TUESDAY 14 MAY
WEDNESDAY 15 MAY
THURSDAY 16 MAY
TUESDAY 21 MAY
WEDNESDAY 22 MAY
THURSDAY 23 MAY
TUESDAY 28 MAY
WEDNESDAY 29 MAY
THURSDAY 30 MAY

SPOKES IN A WHEEL: SOHO SQUARE I
PRIDE AND PREJUDICE 200
LONDON'S VILLAGES: ROTHERHITHE
SPOKES IN A WHEEL: SOHO SQUARE II
WAGNER BIRTHDAY CONCERT
LONDON'S VILLAGES: BERMONDSEY
SPOKES IN A WHEEL: SOHO SQUARE III
TALL: FROM THE PYRAMIDS TO THE SHARD I
LONDON'S VILLAGE: CAMBERWELL

JUNE 2013

TUESDAY 4 JUNE
WEDNESDAY 5 JUNE
WEDNESDAY 12 JUNE

SPOKES IN A WHEEL: SOHO SQUARE IV
TALL: FROM THE PYRAMIDS TO THE SHARD II
TALL: FROM THE PYRAMIDS TO THE SHARD III

INSCAPE TOURS: TERMS AND CONDITIONS

HOW TO BOOK

To secure a booking, please send the required deposit (listed next to each tour description) to the INSCAPE office using the booking form provided. Final payments are due eight weeks prior to each tour.

PRICE

INSCAPE offers different prices for members and non-members, as shown next to each tour.

STUDY TOURS IN THE UK: The price is per person sharing a double room and includes private coach for excursions, public transport as specified, accommodation with private facilities, all breakfasts, tuition, all entrance fees, study packs, gratuities and VAT. Each tour description states how many evening meals are included: house wine is always included with group dinners except where specifically excluded. Not included are lunches unless otherwise stated.

STUDY TOURS ABROAD: The price is per person sharing a double room and includes a return flight, private coach for excursions, public transport as specified, accommodation with private facilities, all breakfasts, tuition, all entrance fees, study packs, gratuities and VAT. Each tour description states how many evening meals are included: house wine is always included with group dinners except where specifically excluded. Not included are lunches unless otherwise stated, drinks other than those included with dinner, or holiday insurance.

If you prefer to make your own travel or accommodation arrangements, INSCAPE will gladly provide separate quotations excluding or upgrading either flight or accommodation or both, on any tour.

SURCHARGES

INSCAPE endeavours to avoid imposing surcharges on its study tours. INSCAPE may be obliged, however, to make a surcharge on any foreign tour price in the event of an abnormal increase in the cost of its supplies. For your benefit, INSCAPE will absorb the first 2% of any such increase in the tour price. Only amounts in excess of this 2% will be surcharged. If the surcharge amounts to an increase of more than 10% of the tour price, you will be entitled to cancel and obtain a full refund within 14 days of the date printed on the surcharge invoice. INSCAPE will absorb any increases after the surcharge invoice or within nine weeks of the tour departure.

INSURANCE

Insurance (against having to cancel your booking or against sustaining loss or damage during the tour) is obligatory on all study tours abroad and advisable on other tours. Milsom Howard insurance brokers (www.milsomhoward.com; (tel: +44 (0) 1895 234 919) are familiar with our business and will be able to advise you as to the most suitable insurance policy for your requirements. Please mention INSCAPE when purchasing your policy.

LIMIT OF LIABILITY

INSCAPE accepts full responsibility for the correct description of services offered in this programme and for supplying those services to a reasonable standard. These responsibilities are limited by international conventions governing carriage by air and sea, and are excluded entirely for loss or damage caused by war, terrorist activities, riots, strikes, natural disasters or other force majeure causes. Loss caused by sickness, theft and loss of baggage can be mitigated through your insurance, subject to the terms and conditions of the policy and the standard terms of the claims procedure being met.

ALTERATIONS AND CANCELLATIONS

BY US: While every care is taken to ensure that the programme will be run as advertised, we reserve the right to alter the details of any study tour (travel times, hotels, itineraries, tutor) should unforeseen circumstances make this necessary; we will always endeavour to make the substitution of equal value and will not issue any refunds. We also reserve the right to cancel any tour which has fewer than ten bookings, though we will endeavour to run tours on low numbers whenever possible. If a tour is cancelled because of low numbers, you will be informed as soon as possible and will receive a full refund. If a tour is cancelled because of war, terrorist activities, riots, strikes, natural disasters or force majeure causes, we will make such refunds as are possible after moneys committed in advance of the tour have been taken into account.

BY YOU: Should you be forced to cancel a booking we will do our best to resell your ticket minus a small administration fee. If we are unsuccessful the following refund schedule applies to the full amount due:

PRIOR TO FINAL PAYMENT DATE (TWO MONTHS PRIOR TO DEPARTURE): DEPOSIT ONLY WILL BE CHARGED

FINAL PAYMENT DATE TO 28 DAYS BEFORE TOUR DATE: 60% WILL BE CHARGED

7 TO 27 DAYS BEFORE TOUR DATE: 75% WILL BE CHARGED

1 TO 6 DAYS BEFORE TOUR DATE: 100% WILL BE CHARGED

PLEASE NOTE THAT DEPOSITS ARE ONLY REFUNDABLE IF WE ARE ABLE TO RESELL YOUR PLACE.

CAVEAT

INSCAPE reserves the right to refuse admission and/or participation on any study day or tour, to any person who, in the opinion of any INSCAPE representative, is likely to cause undue distress to other participants or to the tour leader or to impede the tour itinerary. This right extends to terminating the participation of any such person in any study day or tour without giving compensation.

PHYSICAL INFIRMITY

If you do not inform us **WHEN YOU BOOK** of the full extent and nature of any physical infirmity from which you may suffer, you may incur additional charges to reflect any increases in our costs due to provision of additional support services. If, in our view, the tour is inappropriate for you in light of your physical disabilities we reserve the right to refuse your admission to the study tour before it begins, as it begins, or at any point thereafter without compensation.

TRAVEL TO FINAL DESTINATION

We are happy to give you information regarding health formalities or visa requirements. You are required to have a full passport, which should be valid for six months after the end of the tour, to present at immigration. We travel in economy class on scheduled airlines to the airport(s) specified next to each tour description. Specific flight details will be sent to you as soon as they are known.

AITO

INSCAPE is a member of the Association of Independent Tour Operators. The Association represents Britain's leading independent tour operators and encourages high standards of quality and service. INSCAPE abides by the Association's Code of Conduct and adheres to the AITO Quality Charter, which can be viewed at www.aito.co.uk. Visit the website to find out more about the Association or call 020 8744 9280.



ATOL

INSCAPE study tours with flights are ATOL protected, since we hold an Air Travel Organiser's Licence granted by the Civil Aviation Authority. Our ATOL number is 3219. In the unlikely event of our insolvency, the CAA will ensure that you are not stranded abroad and will arrange to refund any money you have paid to us for an advance booking. For further information, visit the ATOL website at www.atol.org.uk



TOPP

In compliance with the UK Package Travel, Package Holidays and Package Tours Regulations 1992 an insurance policy has been arranged with Travel & General Insurance Company plc, authorised and regulated by the Financial Services Authority, to protect customers' prepayments in the unlikely event of our financial failure and paid in respect of:

- non-flight inclusive packages commencing and returning to the UK
- the ground handling aspects of packages where the customer is responsible for arranging travel to the destination offered in this brochure (subject to the terms of the insurance policy), or:
- a refund of such prepayments if customers have not yet travelled, or
- making arrangements to enable the holiday to continue if customers have already travelled, or repatriation of customers to the UK or their home country as may be applicable.

Customers' prepayments are protected by a topp policy. In the unlikely event of financial failure please contact the claims helpline on 0870 0137 965. A copy of the policy is available on request.



INDEPENDENT TRAVELLERS

If you would like help making your flight reservations, or any other help with your journey, we would recommend Flight Centre. They will find the best, and often the cheapest, flight for you. You should contact their London Bridge branch at Hay's Galleria on 020 7403 0544, introducing yourself as an INSCAPE client.



STUDY DAYS: TERMS AND CONDITIONS

INSCAPE FINE ART STUDY TOURS LTD AND FRIEND&FRIEND LTD

PRICE

For study days that start or end at the Art Workers Guild, the price includes morning coffee or tea, tuition, travel by coach or taxi where indicated, and entry fees unless stated as extra. Lunch and refreshments are included where stated. Study days that take place entirely at the Art Workers Guild include coffee, light two-course lunch with wine and optional tea. **INSCAPE FINE ART STUDY** Ltd Study days and courses are protected by our **TOPP** (Total Payment Protection policy) held with Travel and General. **Friend&Friend Ltd study days are not covered by TOPP.**

ALTERATIONS BY US

INSCAPE FINE ART STUDY TOURS Ltd and Friend&Friend Ltd reserve the right to alter the details of any study day or course should unforeseen circumstances make this necessary. Should we be forced to cancel a study day by circumstances beyond our control, we will offer you a rescheduled date. If we have to cancel a study day because of low enrolment, you will receive a full refund.

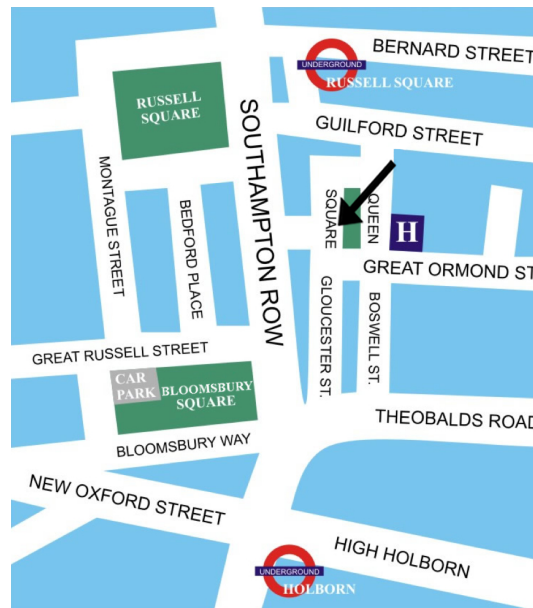
CANCELLATION BY YOU

Should you need to cancel a booking, you will receive the following refunds:

- a full refund (minus a small administrative charge of £7) if you cancel with more than 4 weeks' notice
- no refund if you cancel with less than 4 weeks' notice:

If, however, you cancel with less than 4 weeks' notice and we are able to resell your place to someone on a waiting list, you will receive a full refund, minus a small administrative charge of £7.

INSCAPE BLOOMSBURY
THE ART WORKERS' GUILD
6 QUEEN SQUARE
LONDON



INSCAPE OFFICE
ST JUDE'S COTTAGE
12A CASTLEBAR HILL
LONDON, W5 1TD
020 8566 7539
info@inscapetours.co.uk

INSCAPE CULTURAL STUDY SOCIETY